

## Section 14 of the Road Traffic Regulation Act 1984

### Urgent Closure of: A429 (Part), St. Paul Malmesbury Without

WILTSHIRE COUNCIL HEREBY GIVE NOTICE that on 1 March 2021, the following length of road shall be closed to all traffic in the interests of public safety to enable Forest Traffic Services LTD to carry out tie-in works for Hullavington Airfield Access Road for resurfacing.

A429 (Part), St. Paul Malmesbury Without; from its junction with Seagry Road to property known as Kingway Barn Farm.

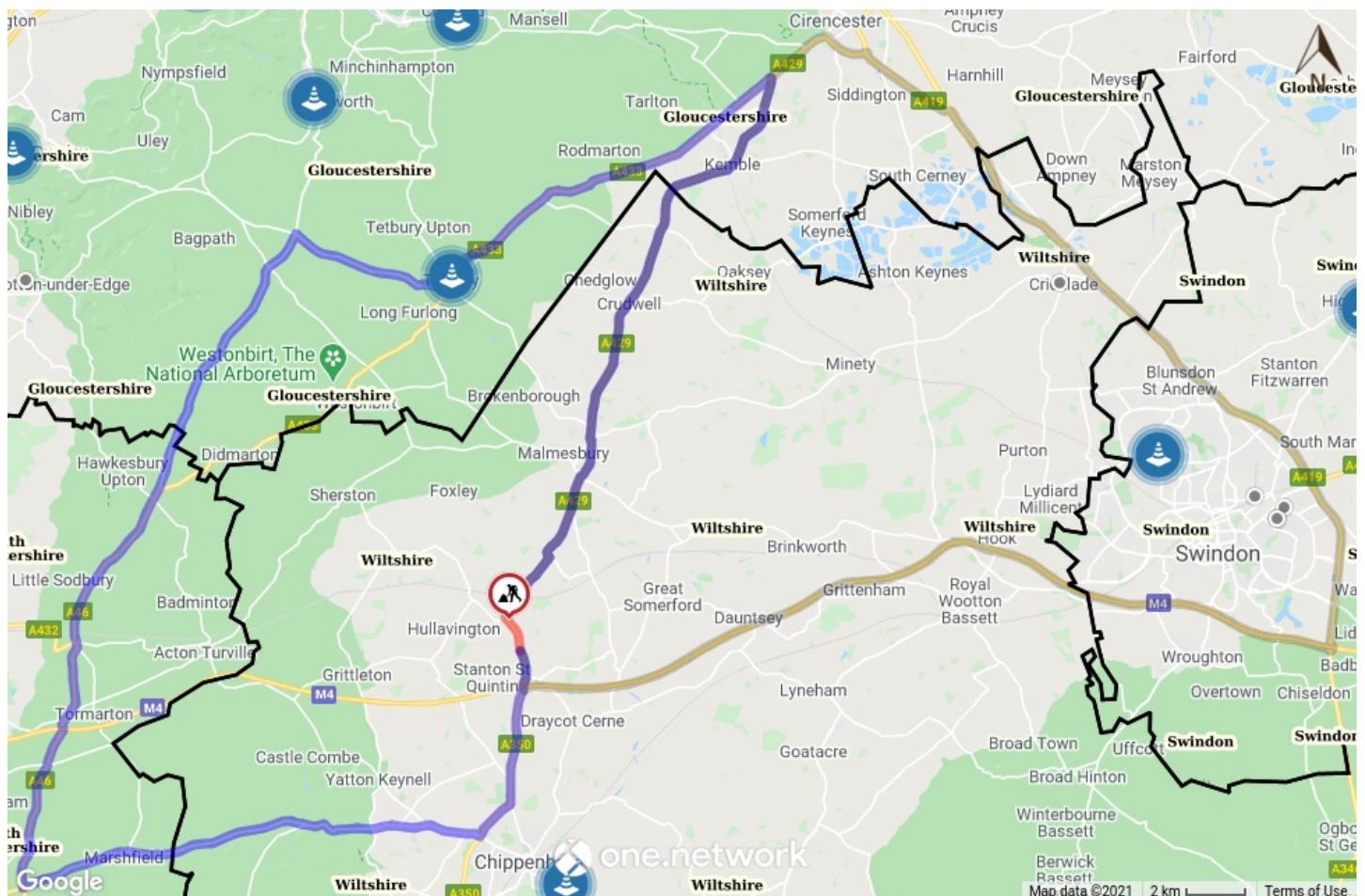
**Alternative route:** via A429 (unaffected length), A433, A4135, A46, A420, A350, A429 (unaffected length) and vice versa.

**Alternative route (HGV):** via A429 (unaffected length), A419, M4, A429 (unaffected length) and vice versa.

**The closure and diversion route will be clearly indicated by traffic signs. Access will be maintained for residents and businesses where possible, although delays are likely due to the nature of the works.**

These works will commence on 1 March 2021 and are anticipated to be required for 5 nights between the hours of 21:00 and 06:00. This Notice will have a maximum duration of 5 days.

For further information regarding these works please contact Greg Sullivan on the behalf of Forest Traffic Services LTD on 0800 3285250.



Map data © [Google Terms of Use](#)

**Sustainable Transport Group, County Hall, Bythesea Road, Trowbridge BA14 8JN**

**REF: 20-21N2102**